

# 10-Year Financial Summary

Nippon Telegraph and Telephone Corporation and its subsidiaries  
Year ended March 31

Billions of yen

	2000	2001	2002	2003
<b>Profit and loss (For the year)</b>				
Operating revenues	¥10,383.3	¥10,836.8	¥11,027.8	¥10,923.1
Operating expenses	9,559.5	10,002.0	10,966.2	9,559.6
Operating income	823.8	834.8	61.5	1,363.6
Other income (expenses) <sup>(2)</sup>	(134.8)	470.4	(152.0)	41.5
Income (loss) before income taxes, minority interests and equity in earnings (losses) of affiliated companies <sup>(2)</sup>	689.0	1,305.2	(90.5)	1,405.0
Income tax expenses (benefit) <sup>(2)</sup>	284.8	592.2	(73.4)	704.3
Minority interest in consolidated subsidiaries <sup>(2)</sup>	(115.2)	(161.3)	1.0	(115.0)
Equity in earnings (losses) of affiliated companies <sup>(2)</sup>	10.1	(17.8)	(668.7)	(329.5)
Net income (loss) <sup>(2)</sup>	¥ 299.0	¥ 533.8	¥ (834.7)	¥ 233.4
<b>Cash flows (For the year)</b>				
Net cash provided by operating activities	¥ 2,796.0	¥ 3,008.8	¥ 2,313.0	¥ 2,438.5
Net cash used in investing activities	(2,934.3)	(5,066.5)	(2,375.7)	(1,987.0)
Net cash provided by (used in) financing activities	(363.1)	1,773.9	457.4	(454.2)
<b>Balance sheet (At year-end)</b>				
Property, plant and equipment (net)	¥11,863.6	¥11,792.4	¥11,497.7	¥11,057.9
Total assets <sup>(2)</sup>	19,101.2	21,759.4	21,424.8	19,783.6
Current liabilities	3,857.8	4,852.1	4,132.0	3,766.4
Long-term liabilities <sup>(2)</sup>	8,318.6	8,665.4	9,918.4	8,853.3
Interest-bearing debt	5,518.0	6,203.1	6,800.8	6,690.7
Minority interest in consolidated subsidiaries	910.3	1,485.7	1,509.4	1,526.3
Capital Stock (common stock plus additional paid-in capital)	3,326.1	3,607.7	3,607.7	3,607.7
Shareholders' equity <sup>(2)</sup>	¥ 6,014.6	¥ 6,756.2	¥ 5,865.1	¥ 5,637.6
<b>Other financial data</b>				
Capital investment (For the year)	¥2,728.8	¥2,665.9	¥2,291.9	¥1,977.6
Research and development expenses (For the year)	350.4	406.0	391.0	396.0
Employees (thousands) (At year-end)	224	215	213	207
<b>Per share of common stock (yen, U.S. dollars)<sup>(1)</sup></b>				
Net income <sup>(2)</sup>	¥ 188.37	¥ 334.66	¥(517.32)	¥ 145.49
Cash dividends, applicable to earnings for the year	¥ 100.00	¥ 50.00	¥ 50.00	¥ 50.00
Average number of Shares outstanding (adjusted to reflect changes in capital)	1,587,376,192	1,595,128,583	1,613,453,817	1,603,941,463

<sup>(1)</sup> Financial data per share of common stock for the fiscal year ended March 31, 2008 and previous years have been adjusted to reflect the 100-for-1 stock split (see Note 14 to the Consolidated Financial Statements) conducted in the fiscal year ended March 31, 2009.

<sup>(2)</sup> In accordance with Accounting Principles Board ("APB") Opinion No. 18 "The Equity Method of Accounting for Investments in Common Stock," NTT has retroactively applied the equity method of accounting to prior years for an investment in an affiliate, following the acquisition by the NTT Group of additional shares of the affiliate during the fiscal year ended March 31, 2008. Accordingly, figures for the fiscal years ended March 31, 2004 to March 31, 2007 have been retroactively adjusted from previously announced figures.

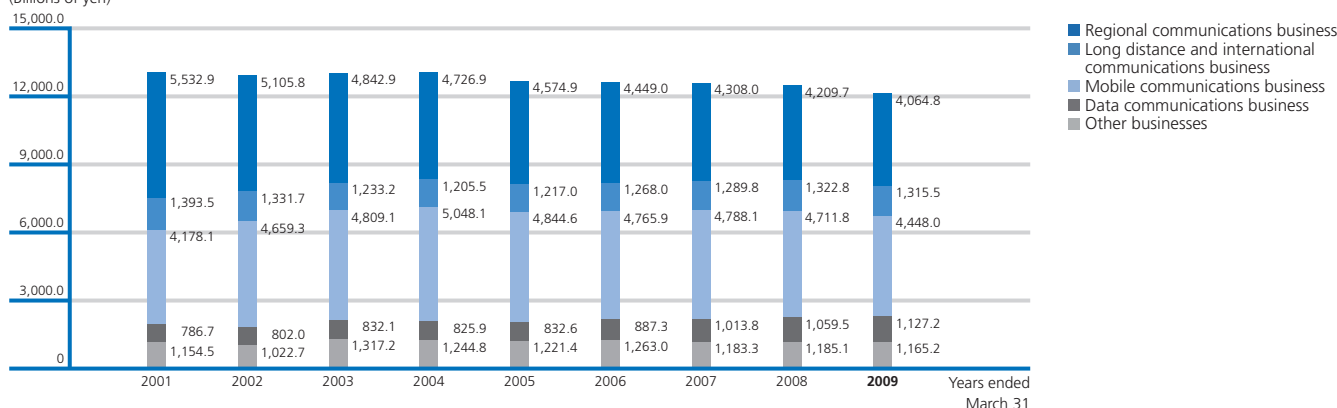
<sup>(3)</sup> Yen amounts have been translated, for convenience only, at ¥98=US\$1, the exchange rate at March 31, 2009.

					Billions of yen	Millions of U.S. dollars <sup>(3)</sup>
2004	2005	2006	2007	2008	2009	2009
¥11,095.5	¥10,805.9	¥10,741.1	¥10,760.6	¥10,680.9	<b>¥10,416.3</b>	<b>\$106,289</b>
9,535.2	9,594.7	9,550.4	9,653.5	9,376.3	<b>9,306.6</b>	<b>94,965</b>
1,560.3	1,211.2	1,190.7	1,107.0	1,304.6	<b>1,109.8</b>	<b>11,324</b>
(33.0)	512.1	111.4	25.7	17.7	<b>(4.6)</b>	<b>(47)</b>
1,527.3	1,723.3	1,302.1	1,132.7	1,322.3	<b>1,105.2</b>	<b>11,277</b>
603.2	713.9	540.8	466.6	520.8	<b>370.1</b>	<b>3,776</b>
(260.0)	(290.2)	(246.1)	(194.8)	(197.4)	<b>(194.5)</b>	<b>(1,984)</b>
(18.8)	(4.6)	(12.1)	10.0	31.0	<b>(1.9)</b>	<b>(20)</b>
¥ 645.4	¥ 714.5	¥ 503.1	¥ 481.4	¥ 635.2	<b>¥ 538.7</b>	<b>\$ 5,497</b>
¥ 3,480.6	¥ 2,829.8	¥ 3,242.9	¥ 2,361.3	¥ 3,090.8	<b>¥ 2,514.1</b>	<b>\$ 25,654</b>
(2,136.8)	(1,768.4)	(2,077.3)	(2,151.0)	(1,990.6)	<b>(2,269.7)</b>	<b>(23,160)</b>
(1,222.5)	(1,112.0)	(1,139.9)	(831.8)	(726.4)	<b>(353.3)</b>	<b>(3,605)</b>
¥10,769.6	¥10,480.6	¥10,435.9	¥10,423.8	¥10,385.6	<b>¥10,201.5</b>	<b>\$104,097</b>
19,413.5	19,064.0	18,820.2	18,291.1	18,518.8	<b>18,796.4</b>	<b>191,800</b>
3,808.8	3,679.6	3,972.6	3,730.8	3,911.9	<b>3,694.2</b>	<b>37,696</b>
7,611.0	6,914.8	6,276.9	5,605.0	5,332.1	<b>5,956.6</b>	<b>60,781</b>
5,921.7	5,525.8	5,296.2	4,770.8	4,677.2	<b>4,899.3</b>	<b>49,993</b>
1,613.2	1,729.3	1,836.3	1,834.5	1,864.0	<b>1,847.5</b>	<b>18,852</b>
3,660.0	3,737.8	3,781.1	3,782.1	3,779.0	<b>3,779.0</b>	<b>38,561</b>
¥ 6,380.5	¥ 6,740.3	¥ 6,734.4	¥ 7,120.8	¥ 7,410.8	<b>¥ 7,298.1</b>	<b>\$ 74,471</b>
¥2,013.6	¥2,057.4	¥2,191.9	¥2,236.9	¥2,128.9	<b>¥2,145.1</b>	<b>\$21,888</b>
354.9	318.1	308.4	272.1	271.1	<b>268.2</b>	<b>2,737</b>
205	201	199	199	193	<b>196</b>	
¥ 407.05	¥ 461.73	¥ 351.46	¥ 348.29	¥ 461.07	<b>¥ 400.41</b>	<b>\$4.09</b>
¥ 50.00	¥ 60.00	¥ 60.00	¥ 80.00	¥ 90.00	<b>¥ 110.00</b>	<b>\$1.12</b>
1,585,568,415	1,547,536,620	1,431,504,928	1,382,076,916	1,377,561,362	<b>1,345,302,411</b>	

## Segment Data

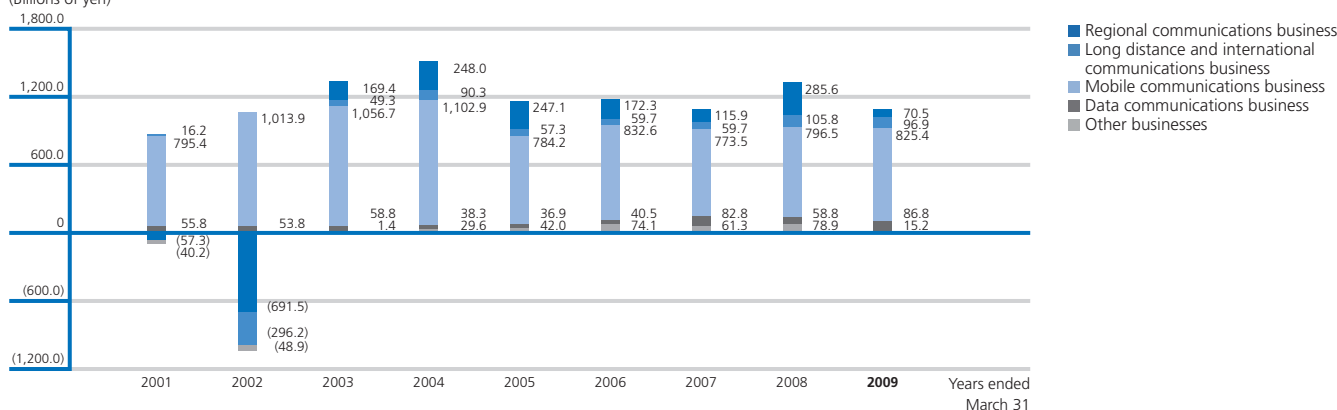
### Total operating revenues

(Billions of yen)



### Total operating income

(Billions of yen)



\* "Elimination of Intersegment" and "Corporate adjustment (to reverse and defer telephone card revenue for expected future usage)" are not included.  
 \* Certain items for prior years' financial statements have been reclassified.

## Major Subsidiaries' Data

### NTT East

(JAPAN GAAP)

	Billions of yen								
Years ended March 31	2001	2002	2003	2004	2005	2006	2007	2008	2009
Operating revenues	¥2,794.5	¥2,573.6	¥2,352.2	¥2,267.1	¥2,180.9	¥2,125.3	¥2,061.3	¥2,002.7	¥1,952.9
Operating expenses	2,760.4	2,569.1	2,303.8	2,180.7	2,093.1	2,059.3	2,001.4	1,957.7	1,916.2
Operating income (loss)	34.0	4.5	48.3	86.4	87.7	65.9	59.9	44.9	36.6
Non-operating revenues	46.5	48.5	68.2	61.2	61.0	63.2	70.4	66.1	69.2
Non-operating expenses	66.4	45.5	53.2	49.8	51.1	45.0	39.9	43.7	40.5
Recurring profit (loss)	14.1	7.5	63.3	97.8	97.6	84.2	90.3	67.4	65.3
Net income (loss)	20.0	(186.7)	3.0	57.9	58.1	51.2	84.3	96.8	77.5

### NTT West

(JAPAN GAAP)

	Billions of yen								
Years ended March 31	2001	2002	2003	2004	2005	2006	2007	2008	2009
Operating revenues	¥2,639.5	¥2,406.7	¥2,215.0	¥2,166.8	¥2,098.0	¥2,029.6	¥1,951.5	¥1,901.2	¥1,824.3
Operating expenses	2,739.8	2,573.4	2,172.3	2,080.1	2,027.8	1,997.5	1,931.0	1,887.3	1,816.5
Operating income (loss)	(100.3)	(166.7)	42.6	86.6	70.1	32.0	20.4	13.9	7.7
Non-operating revenues	47.7	44.2	55.2	54.9	56.0	66.6	76.8	59.4	52.1
Non-operating expenses	53.1	48.0	53.0	51.0	46.1	42.1	43.3	48.5	40.3
Recurring profit (loss)	(105.7)	(170.4)	44.9	90.5	80.0	56.5	54.0	24.8	19.5
Net income (loss)	(44.6)	(355.3)	19.3	61.5	41.0	32.6	28.3	(37.7)	15.4

## NTT Communications

(JAPAN GAAP)

Billions of yen

Years ended March 31	2001	2002	2003	2004	2005	2006	2007	2008	2009
Operating revenues	¥1,355.5	¥1,275.1	¥1,152.0	¥1,106.6	¥1,090.0	¥1,127.8	¥1,145.4	¥1,154.5	<b>¥1,127.1</b>
Operating expenses	1,265.1	1,199.4	1,006.7	990.3	1,020.1	1,060.3	1,068.1	1,049.7	<b>1,026.3</b>
Operating income (loss)	90.3	75.7	145.3	116.2	69.8	67.5	77.3	104.7	<b>100.8</b>
Non-operating revenues	33.4	37.3	27.9	26.5	26.1	30.7	29.5	35.1	<b>32.3</b>
Non-operating expenses	42.1	37.8	30.0	29.7	28.0	26.4	29.1	27.8	<b>19.6</b>
Recurring profit (loss)	81.6	75.1	143.2	113.0	67.9	71.8	77.8	112.0	<b>113.5</b>
Net income (loss)	42.2	(410.7)	13.6	24.1	24.6	31.4	30.3	62.7	<b>89.0</b>

## NTT DATA (Consolidated)

(JAPAN GAAP)

Billions of yen

Years ended March 31	2001	2002	2003	2004	2005	2006	2007	2008	2009
Operating revenues	¥801.0	¥801.9	¥832.1	¥846.7	¥854.1	¥907.2	¥1,044.9	¥1,074.4	<b>¥1,139.0</b>
Cost of sales	598.2	591.3	622.0	637.9	648.3	682.2	786.3	813.3	<b>861.9</b>
Gross profit (loss)	202.8	210.6	210.0	208.7	205.7	225.0	258.5	261.0	<b>277.1</b>
Selling and general expenses	144.0	151.2	148.4	149.0	166.4	178.1	168.3	165.1	<b>178.6</b>
Operating income (loss)	58.7	59.4	61.5	59.7	39.2	46.8	90.2	95.9	<b>98.5</b>
Non-operating income	(12.6)	(12.2)	(14.2)	(10.0)	(7.1)	(4.8)	(4.4)	(1.5)	<b>(2.9)</b>
Recurring profit (loss)	46.0	47.1	47.3	49.6	32.1	42.0	85.7	94.3	<b>95.5</b>
Net income (loss)	24.4	26.4	28.5	26.9	20.1	28.1	50.6	30.4	<b>48.3</b>

## NTT DOCOMO (Consolidated)

(U.S. GAAP)

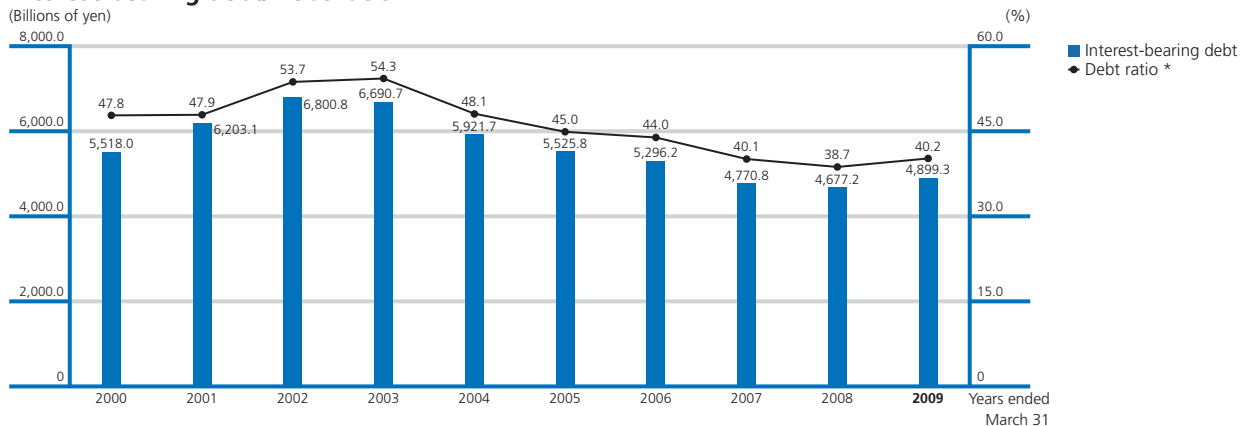
Billions of yen

Years ended March 31	2001	2002	2003	2004	2005	2006	2007	2008	2009
Operating revenues	¥4,178.0	¥4,659.2	¥4,809.0	¥5,048.0	¥4,844.6	¥4,765.8	¥4,788.0	¥4,711.8	<b>¥4,447.9</b>
Operating expenses	3,399.4	3,658.3	3,752.3	3,945.1	4,060.4	3,933.2	4,014.5	3,903.5	<b>3,617.0</b>
Operating income (loss)	778.6	1,000.8	1,056.7	1,102.9	784.1	832.6	773.5	808.3	<b>830.9</b>
Non-operating income (loss)	(20.4)	(44.4)	(13.7)	(1.7)	504.0	119.6	(0.5)	(7.6)	<b>(50.5)</b>
Income before tax (loss)	758.1	956.3	1,042.9	1,101.1	1,288.2	952.3	772.9	800.6	<b>780.4</b>
Net income (loss)	401.7	(116.1)	212.4	650.0	747.5	610.4	457.2	491.2	<b>471.8</b>

## Debt-Related Data

### Interest-bearing debt/Debt ratio

(Billions of yen)



\* Debt ratio = Interest-bearing debt / (Interest-bearing debt + Shareholders' equity) x 100